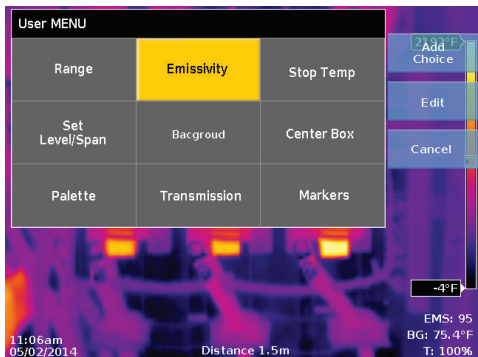
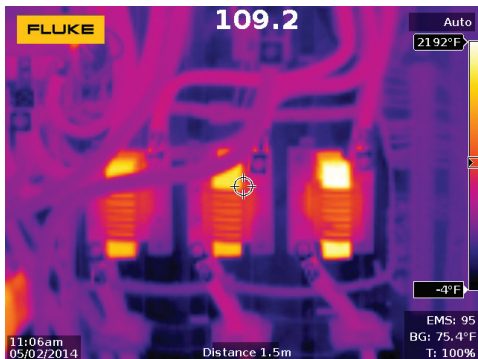


Touch Screen



TiX520, TiX560

Expert Series Thermal Imager

Quick Reference Guide

⚠️ Warning

To prevent possible electrical shock, fire, or personal injury, read all “Safety Information” before you use this Product.

Go to www.fluke.com to register your product and find more information.

To view, print, or download the latest manual or supplement, visit us.fluke.com/user/support/manuals.

To download SmartView® software visit www.fluke.com/smartviewdownload.

To download the Fluke Connect™ app, go to iTunes or Google play and download Fluke Connect.

